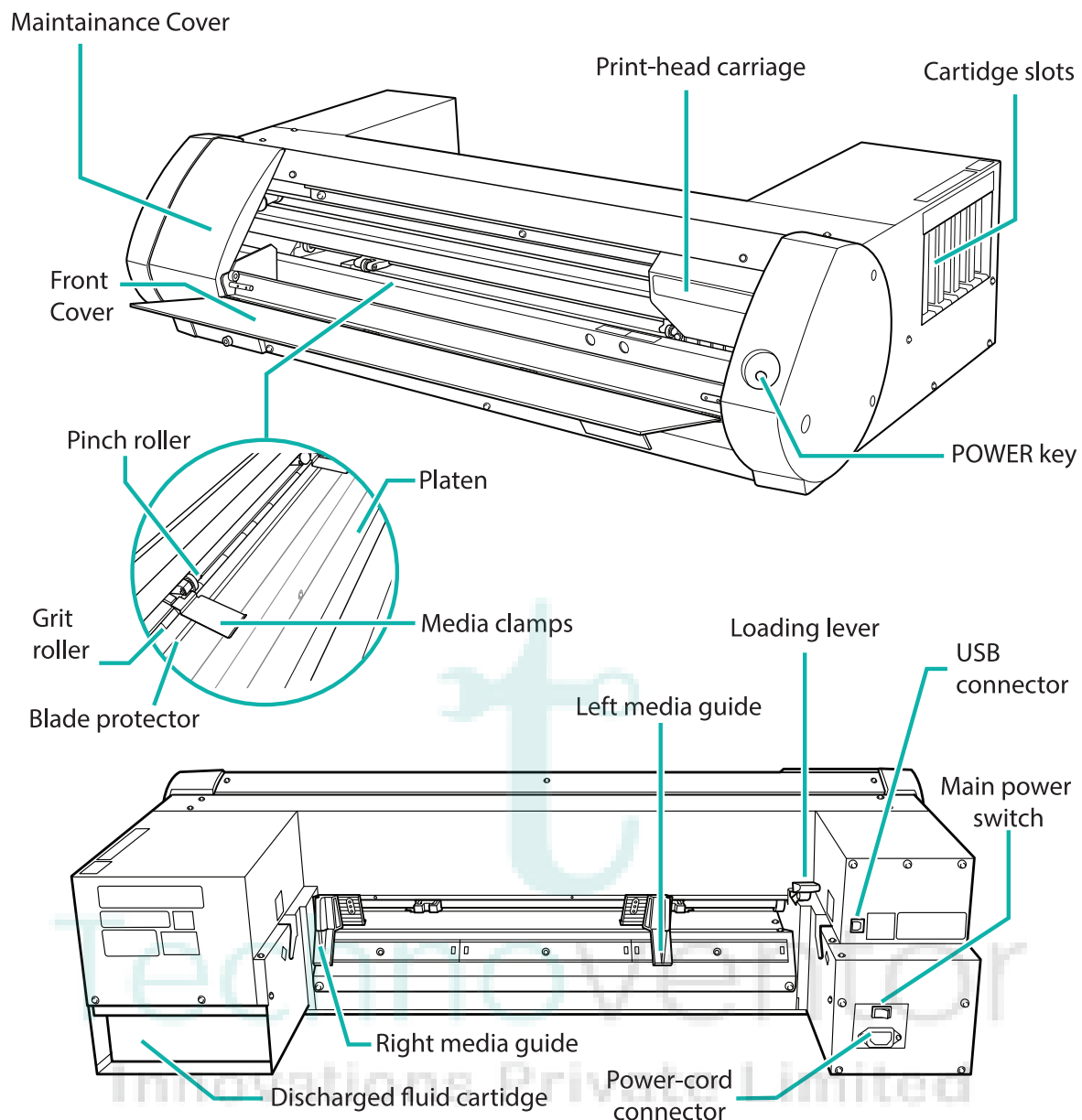


Quick start guide

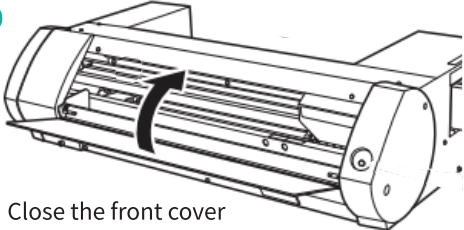
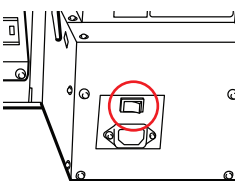
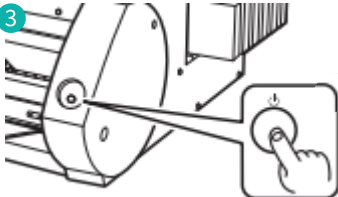
Vinyl Printing and Cutting Machine **Roland BN-20A**



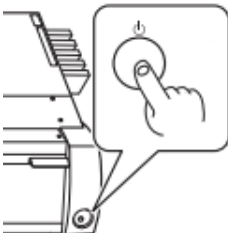
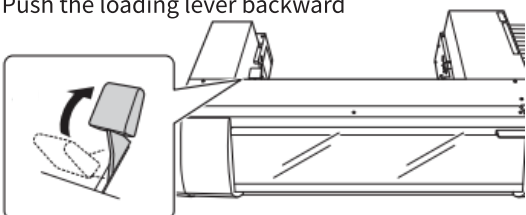
Machine Appearance & Accessories



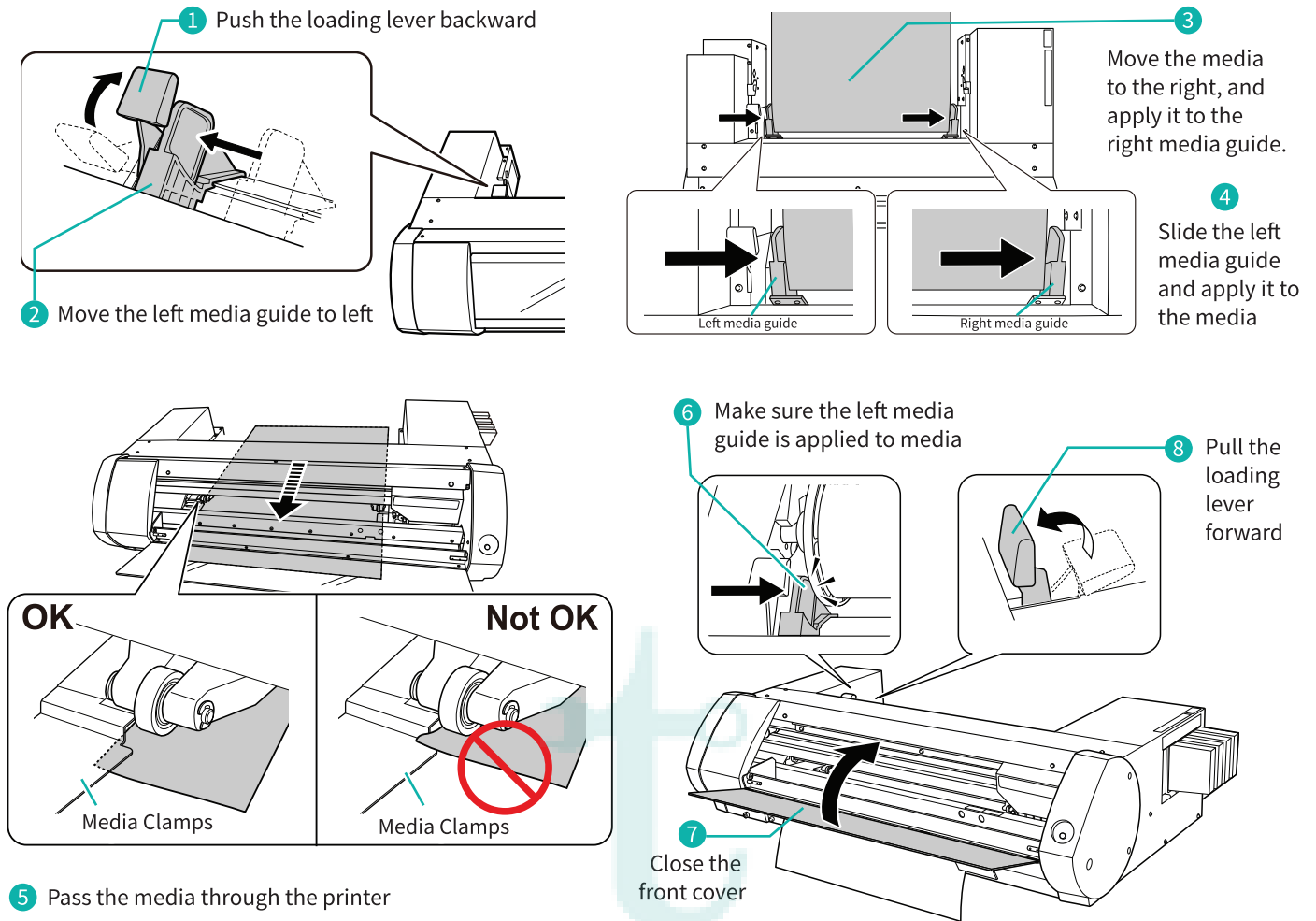
Switching the power on

- 1  Close the front cover
- 2  Switch on the Main power on which is backside of machine .
- 3  Press the POWER key

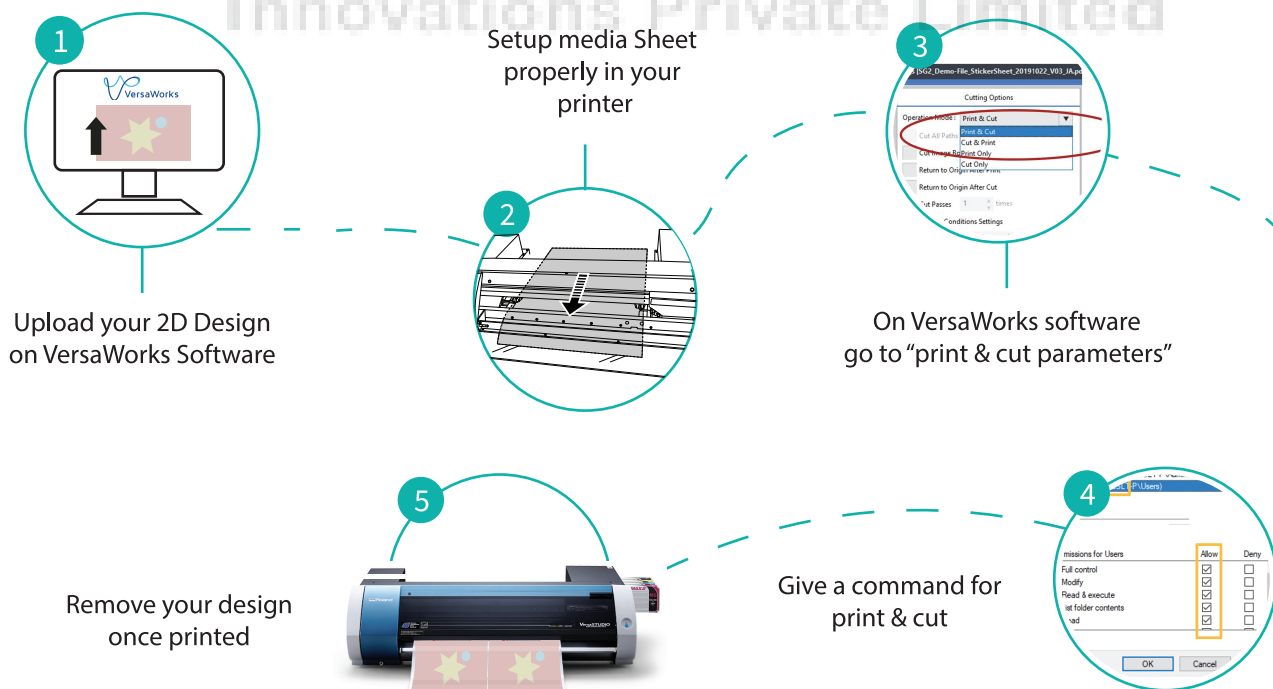
Switching the power off

- 1  When output is completed, press and hold down the POWER key for one second or more.
- 2  Push the loading lever backward

Loading Sheet Media



Operation



DO's

- ✓ Handle carefully, and never subject the machine to impact or excessive force.
- ✓ Before attempting cleaning, maintenance, or attachment or detachment of optional items, disconnect the power cord.
- ✓ Conduct operations in a clean, brightly lit location.
- ✓ If sparking, smoke, burning odor, unusual sound, or abnormal operation occurs, immediately unplug the power cord. Never use it if any component is damaged.
- ✓ Ensure adequate ventilation for the work area.
- ✓ When printing is not being performed, remove any loaded media or switch off the power.

DONT's

- ✗ Never operate the machine while tired or after ingesting alcohol or any medication.
- ✗ Never climb or lean on the machine.
- ✗ Never attempt operation while wearing a necktie, neck-lace, or loose clothing. Bind long hair securely.
- ✗ Never allow an ink cartridge to be subjected to impact, and never attempt to disassemble.
- ✗ Never place any flammable object nearby.
- ✗ Never allow any foreign object to get inside.
- ✗ Never expose to liquid spills.

Machine Specification

Printing /Cutting method	Piezoelectric inkjet / Grit roller feed	Printing Resolution	Max 1440 dpi
Acceptable Media Width	5.9to 20 in	Cutting Blade Type	Roland CAMM-1 series cutter blade
Acceptable Media Thickness	Printing : Maximum 39 mil (1.0 mm) with liner Cutting: Maximum 16 mil (.4 mm) with liner	Cutting Force / Offset	30 to 300gf / Fixed Offset
Acceptable Media Roll Weight	Maximum 13.2 lbs (6 kg)	Connectivity	USB 2.0
Acceptable Media Roll Outer Diameter	Maximum 5.9 in (150 mm)	Power-saving Function	
Acceptable Media Core Diameter	2 in (50.8 mm) or 3 in (76.2 mm) cores	Automatic sleep feature	
Printing/Cutting Width	Maximum 18.9 in (480 mm)	Dimensions	
Ink Cartridges - Type & Capacity	Roland ECO-SOL MAX2	39.2 (W) x 23 (D) x 11.5(H) in (995 (W) x 585 (D) x 291 (H) mm)	
Ink Colours	4 Colours - 5 Cartridges CMYK - 2 Magenta	Power Supply	
		AC 100 to 240 ^ 10%, 7.2	
		Weight	77 lbs (35 kg)

For any queries contact:

✉ service@technoventor.com

☎ 8828294964 / 7304419928